

Dream Big 9 Patch Pattern

featuring
Dream Big Panels by Hoffman Fabrics

Finished Quilt Size: 78" x 78"

Fabric Requirements for Quilt:

- 1 Dream Big panel (by Hoffman Fabrics) for Center Piece
- 3 Dream Big panels (by Hoffman Fabrics) for Side Pieces

Optional Supplies:

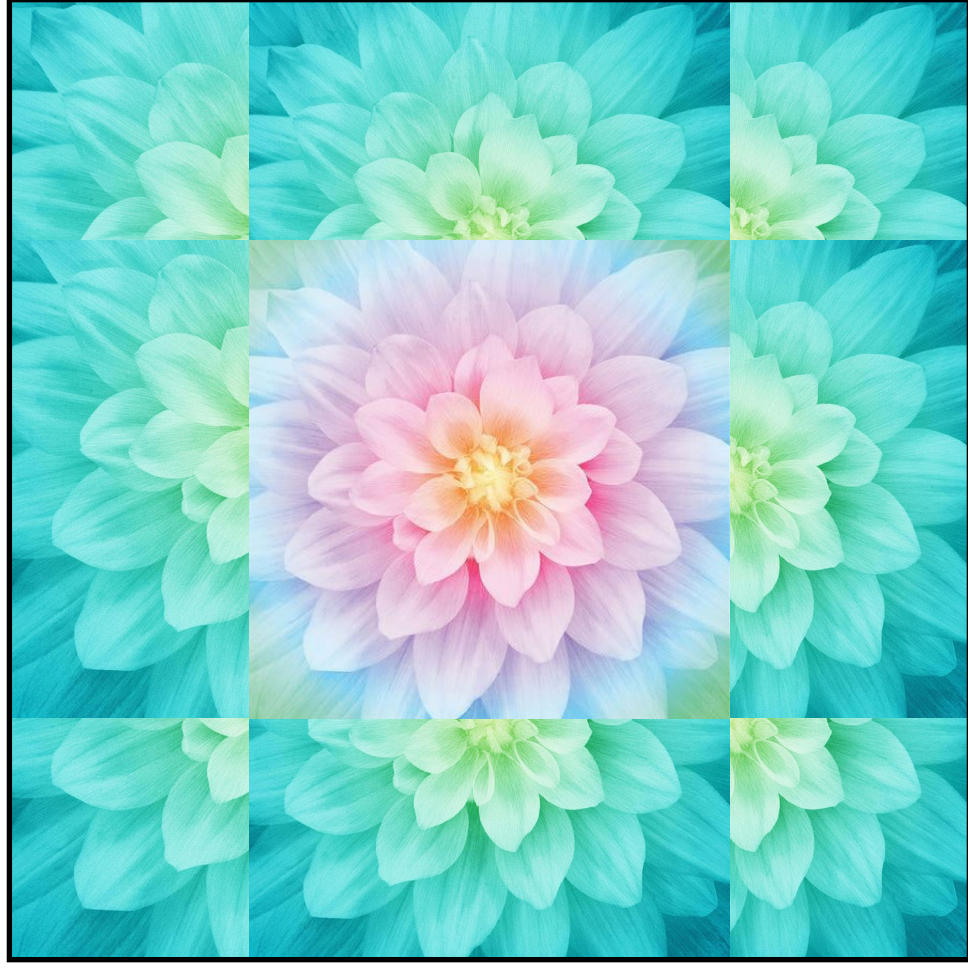
Marking Pencil or Pen
Pins
Iron



Dream Big 9 Patch Pattern

featuring

Dream Big Panels by Hoffman Fabrics



© 2020 Brian Partin and Patricia E. Ritter



urban elementz.

125 sunny creek
new braunfels . texas . 78132
www.urbanelementz.com

by
Brian Partin and Patricia E. Ritter

Dream Big 9 Patch Pattern

Finished Quilt Size: 78" x 78"

Fabric Requirements for Quilt:

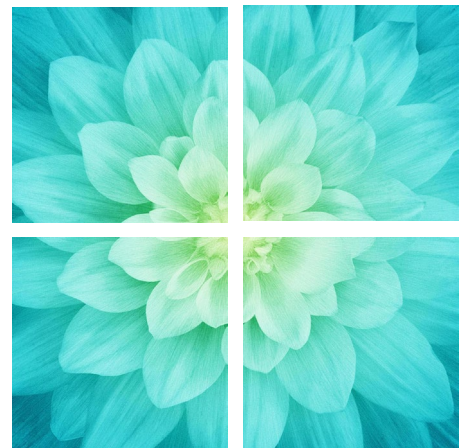
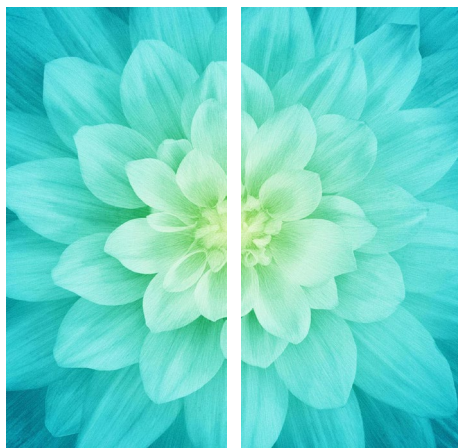
- 1 Dream Big panel (by Hoffman Fabrics) for Center Piece
- 3 Dream Big panels (by Hoffman Fabrics) for Side Pieces

Optional Supplies:

- Marking Pencil or Pen
- Pins
- Iron

Cutting Instructions:

1. Trim and square up each Dream Big panel to 40" x 40" square.
2. Cut 1 Dream Big panel (that was selected for the perimeter of your quilt) in half lengthwise, and cut 1 Dream Big panel (that was selected for the perimeter of your quilt) in half widthwise. Set aside.
3. Cut 1 Dream Big panel (that was selected for the perimeter of your quilt) in quarters. Set aside.



Construction:

- *¼" seam allowances are used in construction of the project.*

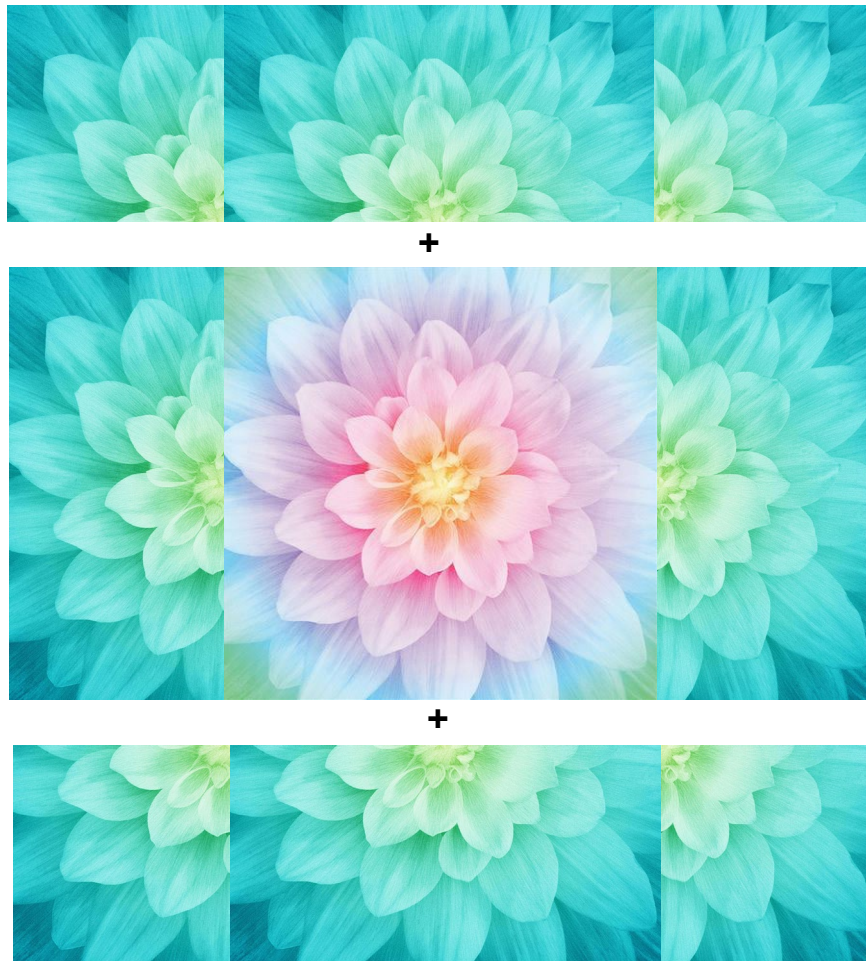
4. Pin and sew the panels cut in quarters in step #3 to each side of the Dream Big panel cut lengthwise in step #2.



5. Pin and sew the panels cut widthwise in step #2 to each side of the Dream Big center panel.



6. Pin and sew the panel rows assembled in steps #4 and #5 to the top and bottom of the Dream Big center panel.



7. Layer, quilt as desired and bind.



urban elementz.