

Mask Assembly Instructions

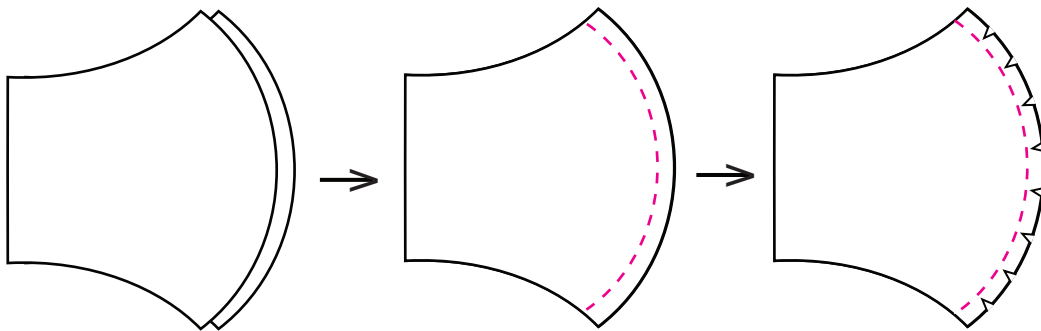
NOTE: If using laser-cut pre-fused fabric pieces, skip step #1 and proceed to step #2. Use ¼" seam allowance for assembly.

Supplies: One set of laser-cut pre-fused mask pieces OR
15" x 15" piece of fabric, 15" x 15" piece of non-woven fusible interfacing and 18" of ⅛" or ¼" wide elastic
NOTE: four 18" long pieces of ribbon or sewn ties can be substituted for the elastic.

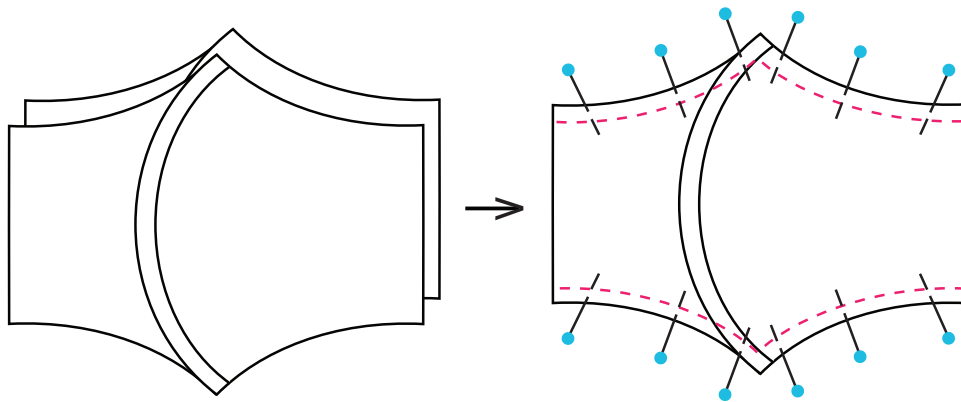
Optional Supplies: One 5" piece of pliable metal wire/strip (16-18 gauge)
NOTE: craft wire, floral wire, copper wire or pipe cleaners are all good options for the metal wire

1. Iron non-woven fusible interfacing to the wrong side of a piece of fabric measuring approximately 15" x 15" square. Cut out 4 pieces of the mask units using the template on page #3.

2. Place right sides of 2 cut mask units on top of each other and stitch pieces along the curved edge. Repeat the same process for two more mask units. Snip notches into the curve approx. every ½", carefully avoiding the stitching.

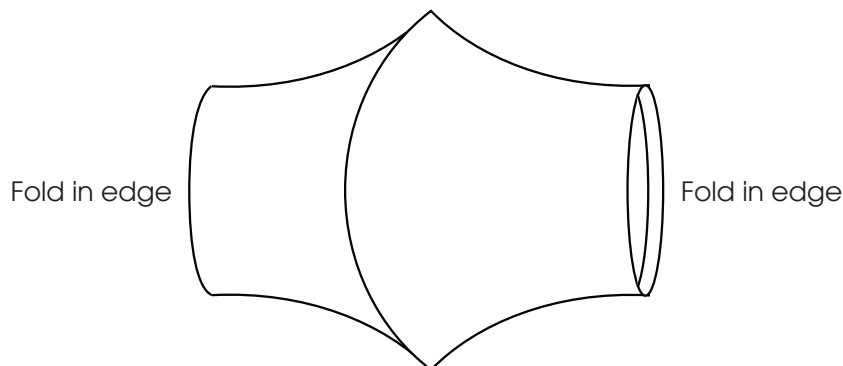


3. Place right sides of the two mask pieces assembled in step #2 together. Pin or clip together and stitch along the top and bottom edges.

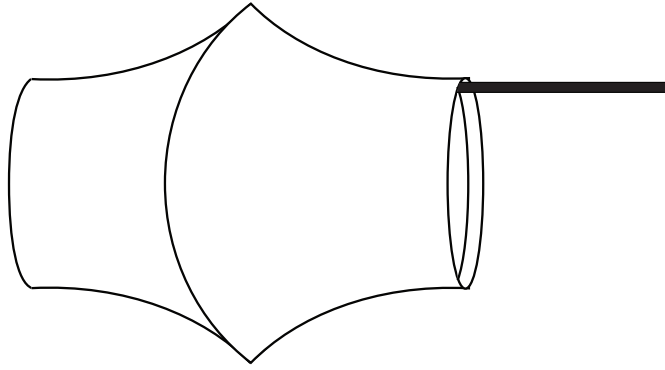


4. Turn mask stitched together in step # 3 right side out.

5. Fold in edges on both sides of the mask approximately ¼ inch. Press the entire perimeter and folded edges flat.

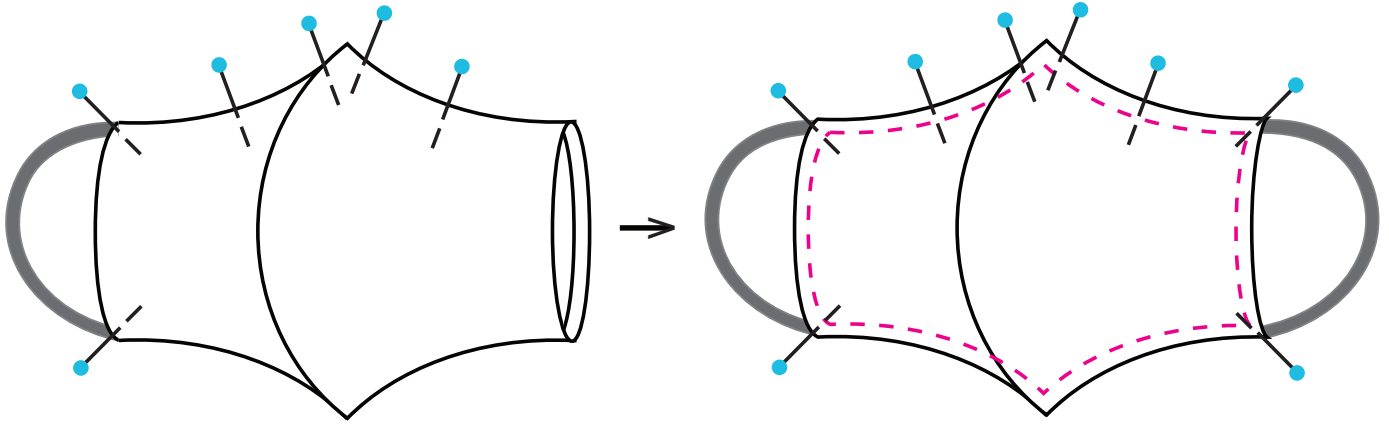


6. Insert OPTIONAL metal wire inside the top edge of the mask. Temporarily secure metal wire in place with pins or clips.

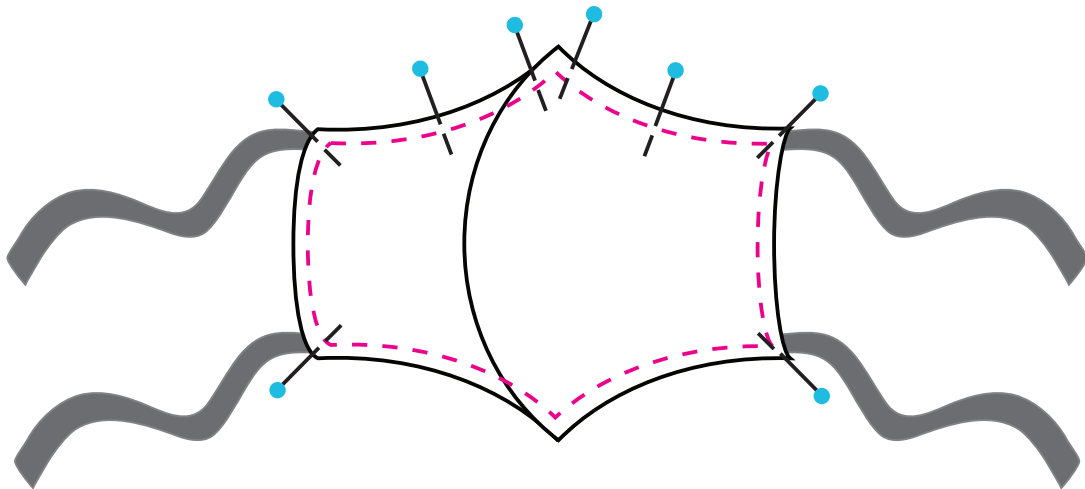


7. Cut elastic into 2 pieces 8" long OR assemble and/or cut ties into 4 pieces 18" long.

8. If using elastic, insert both ends of elastic into one side of the mask forming a loop. Repeat for the process on the other side of the mask. Stitch around the entire perimeter of the mask.



9. If using ties, insert 2 ties into one end of the mask. Temporarily secure the ties in place with pins or clips. Repeat for the process on the other side of the mask. Stitch around the entire perimeter of the mask.

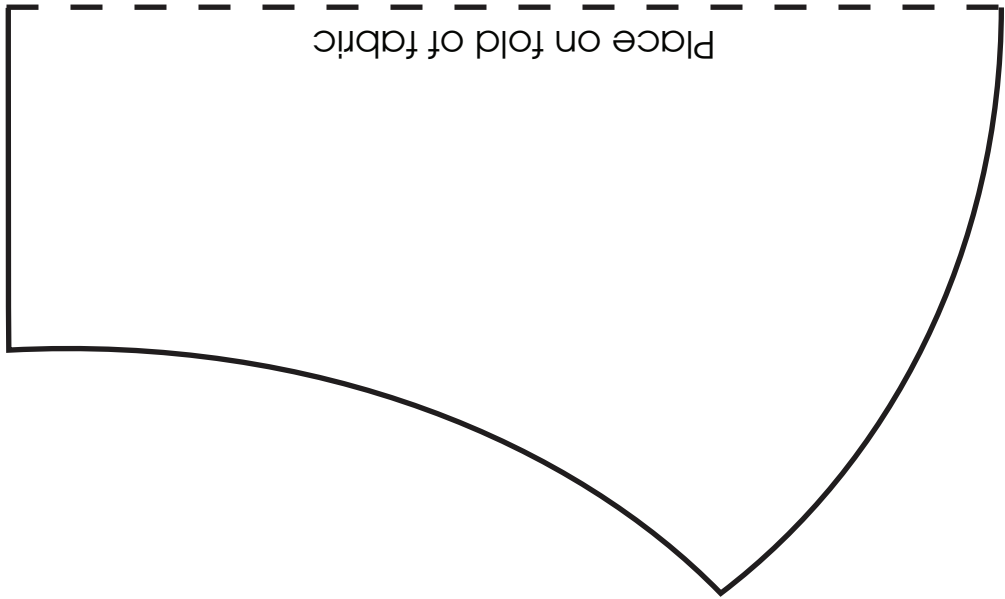


urban elementz.

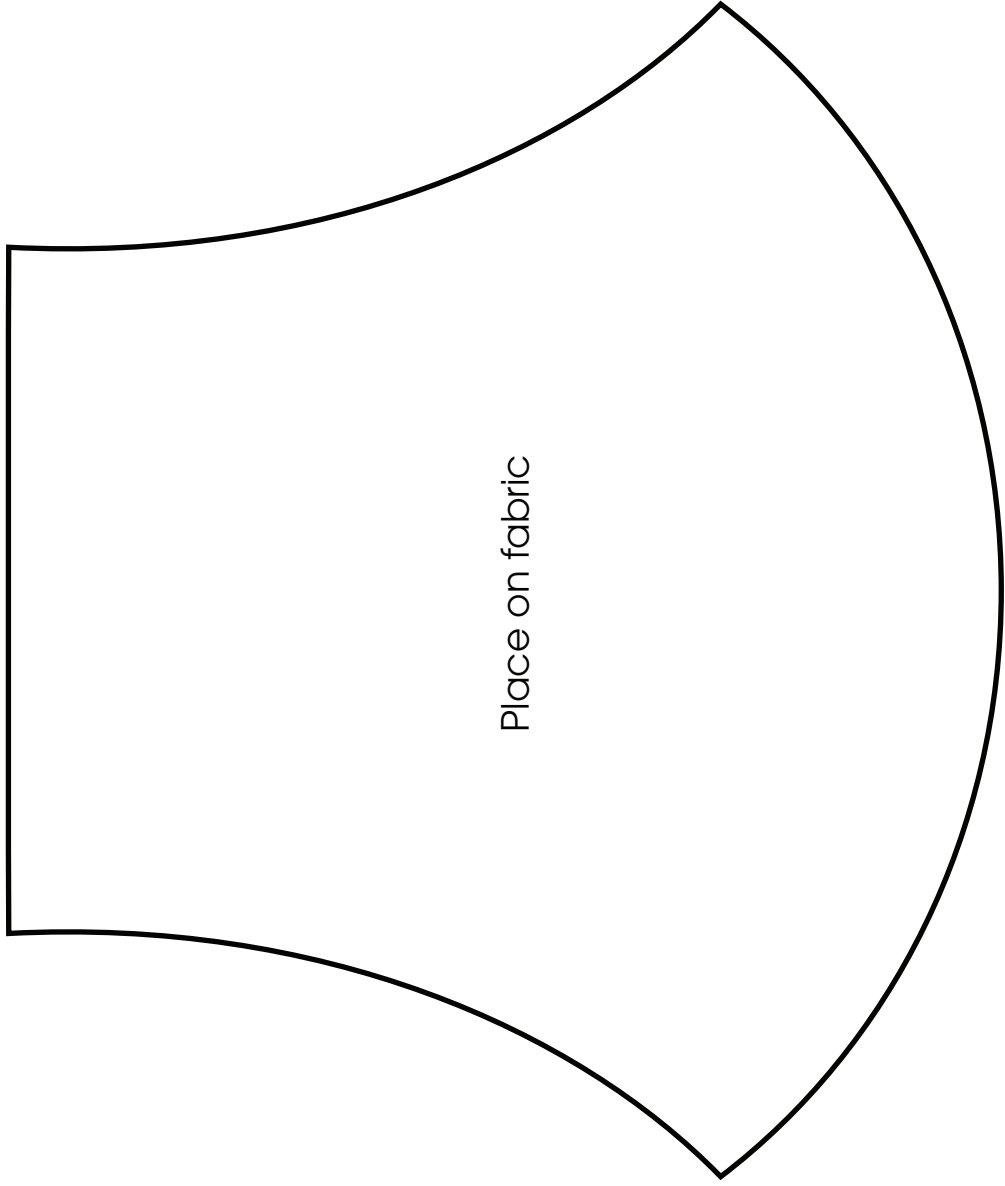
www.urbanelementz.com

Use either template:

Dotted line on Template #1 should be placed on fabric fold.
Template #2 is for placing flat on fabric.



Template #1



Template #2